

Ysgol Gynradd TRELALES Primary School



Prospectus

Trelales Primary School
Ysgol Gynradd Trelales

Visitors Report to Reception
Ymwelys i'r Gynnydd
Ymwelys i'r Gynnydd
Ymwelys i'r Gynnydd

Welcome to TRELALES Primary School

Trelales Primary School

Well Street

Laleston

CF32 0LF

Telephone: 01656 815610

E mail: head@trelalesps.bridgend.cymru

admin@trelalesps.bridgend.cymru

Website: www.trelalesprimaryschool.co.uk

Headteacher: Mr A. Morrison

Deputy Headteacher: Mrs J. Fitzgerald

Chair of Governors: Mrs S. Davies

Term dates

Autumn term 2023

Begins: 4th September

Half term: 30th October-3rd November

Ends: 22nd December

Spring term 2024

Begins: 8th January

Half term: 12th February-16th February

Ends: 22nd March

Summer term 2024

Begins: 8th April

Half term: 27th May – 31st May

Ends: 22nd July

School structure and timings

Trelales is a Primary School is situated in Laleston, which is just outside of Bridgend. We admit children from Nursery age to Year 6 and we currently have one class per year group from years 1-6 and a mixed nursery and reception class. The language spoken at the school is English.

School times:

Nursery

Start of the day: 9.00am

Morning break: 10.20am – 10.35am

Lunch: 11.30am -12.30pm

Afternoon break: 2.20pm – 2.30pm

End of the day: 3.00pm

Reception Class to Year 6

Start of the day: 9.00am

Morning break: 10.20am – 10.35am

Lunch: 11.30am -12.30pm

Afternoon break: 2.20pm – 2.30pm

End of the day: 3.30pm

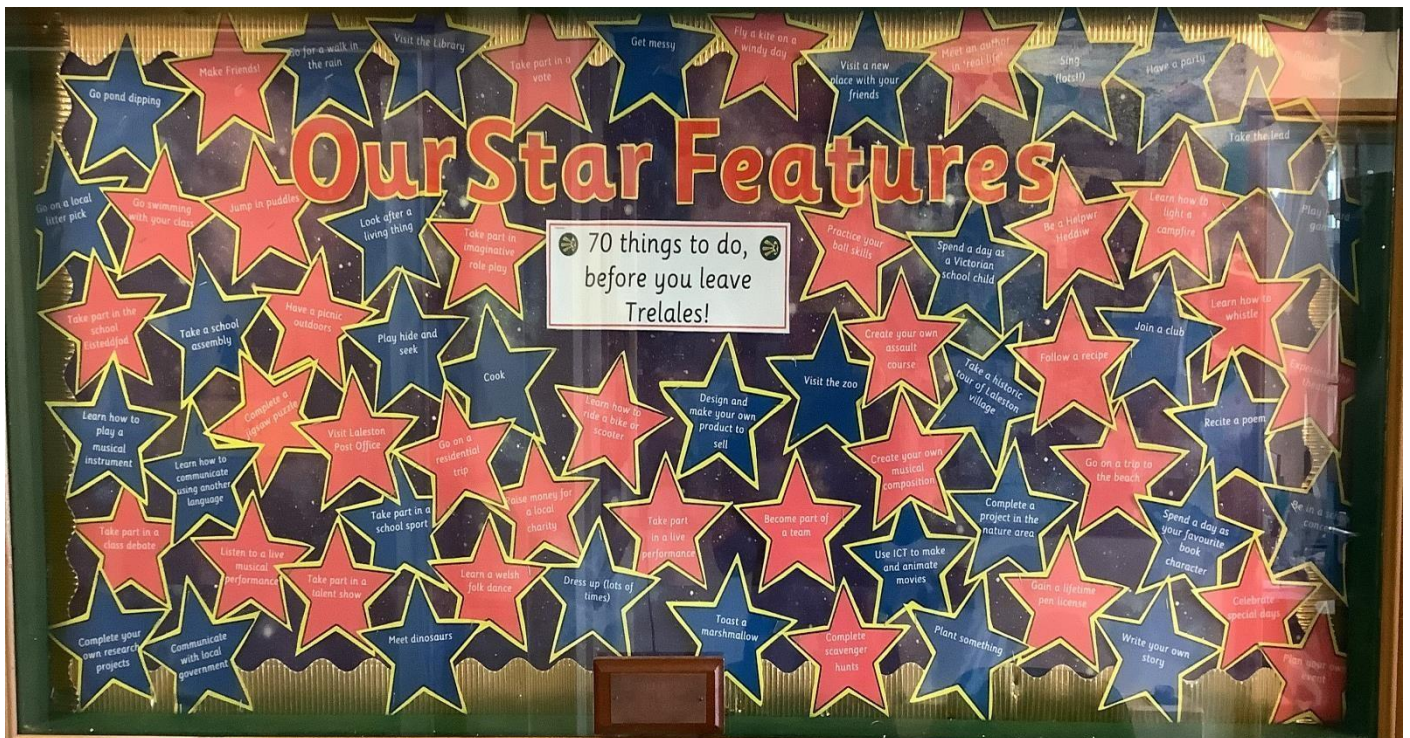
From 8.50 Each morning, a member of staff will be present at the school gates to supervise children before the bell rings for the start of the school day at 9.00.



Our Motto and Vision



At Trelales we strive to create an irresistible and imaginative learning environment within a happy and caring setting. Through exploration and discovery, we aim to develop a sense of wonder and enchantment through the provision of authentic and meaningful learning experiences. We enable pupils to flourish as ethical, independent and confident individuals with a strong sense of worth, who are encouraged to celebrate their own successes as well as the success of others. We endeavour to inspire our pupils to become ambassadors for the Laleston community, Wales and the wider world.



Our Cosmic Curriculum

Ethical Enfys



Ambitious Alys



Healthy Hari



Creative Carys

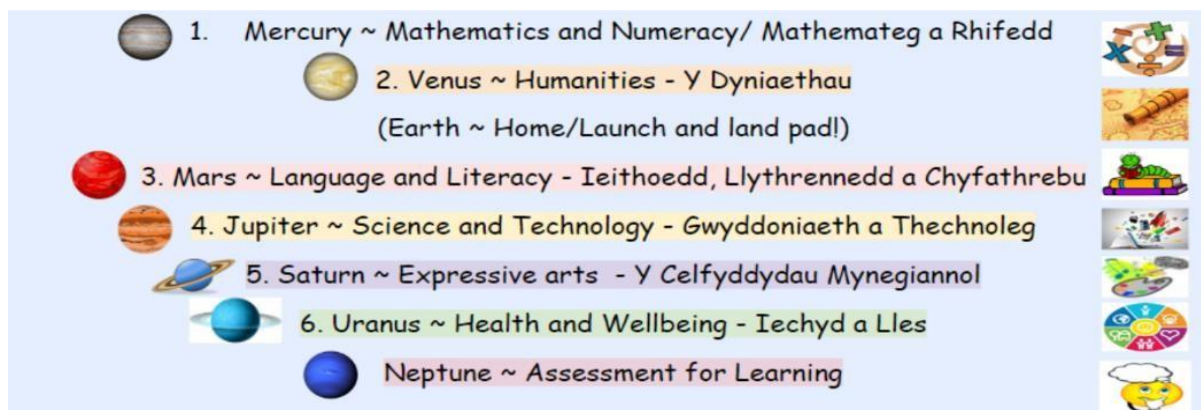


At Trelales we have created a new Cosmic Curriculum based on the principles of the four purposes. With the help of our alien characters above created and named by our staff and pupils, we aim to inspire our pupils to become:

- Ethical, informed citizens of Wales and the world.
- Ambitious, capable learners, ready to learn throughout their lives.
- Healthy, confident individuals ready to lead fulfilling lives as valued members of society.
- Enterprising, creative contributors, ready to play a full part in life and work.

We have created a whole school, cross curricular thematic approach which allows our pupils to explore the six Areas of Learning Experience (AoLEs) in a broad and balanced way.

	AUTUMN 1 ME AND YOU	AUTUMN 2 MYSTERIES OF HISTORY	SPRING 1 THE LAND OF STORIES	SPRING 2 CYMRU CYFFROUS	SUMMER 1 WORLDLY WONDERS AND BEYOND	SUMMER 2
NURSERY	FRIENDS	THE SEASONS	NURSERY RHYMES	THE FARM/FOOD THE GARDEN	THE GARDEN OUT AND ABOUT	
RECEPTION	PEOPLE WHO HELP US	DINOSAURS	FAIRY TALES	ON OUR DOORSTEP	SPACE/ THE SEASIDE	
YEAR 1	ME AND YOU	TOYS	WE'RE GOING ON A BEAR HUNT	WONDERFUL WEATHER	OUR SCHOOL LITTLE RED RIDING HOOD	
YEAR 2	ALL ABOUT ME	LEGENDS AND LIGHT	THE DAY THE CRAYONS QUIT	MILWYR ECO CYMRU	A MAGIC CARPET RIDE	
YEAR 3	MY CELTIC ORIGINS	ROMANS	JAMES AND THE GIANT PEACH	WATER/ POND DIPPING	ITALY	
YEAR 4	BEING ME!	VICTORIAN VILLAGES	THE CLOCKWORK CROW	WONDERFUL WILD WALES	WELSH EXPLORERS	
YEAR 5	THE OLYMPICS	WORLD WARS	WAR HORSE	THE NATURAL WORLD	INTO AFRICA	
YEAR 6	HEALTH AND HAPPINESS	TIME TRAVELLERS	KENSUKE'S KINGDOM	ISLAND EXPLORERS	OUT OF THIS WORLD	

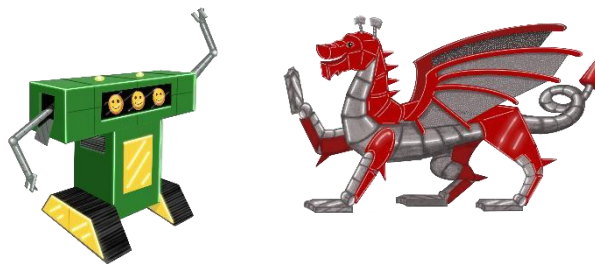


In Trelales, the AoLEs are identifiable by their own colour, icon and ‘home planet’.

Within our Cosmic Curriculum we have added an additional area of Assessment for Learning (AfL) which is an integral aspect of teaching and learning within each AoLE. Each of our AoLEs encompass the statements of what matter and reflect the principles of progression and learning descriptors.

- Our Cosmic Curriculum also encompasses the mandatory cross curricular skills of Literacy, Numeracy and Digital Competency.
- Our curriculum includes the mandatory curriculum elements of Religion, Values and Ethics (RVE) and Relationships and Sexuality Education (RSE).
- It provides opportunity for pupils to experience a sense of Cynefin through their exploration of local, national and international contexts.
- Our pupils understand that Trelales is a rights respecting school.

Our school mascots, Digital Daf and Dewi'r Ddraig, remind all our pupils of the importance of our local and Welsh identity in a changing and technological global world.



We have implemented a collaborative approach to our Cosmic Curriculum. Teachers and pupils work together to construct and implement their half termly topic plan.

Our curriculum has been co-constructed with practitioners, parents and governors. We have worked alongside one another to inform, design and refine our vision in a continuing process of reviewal and reform.

At Trelales, we recognise that curriculum design is a continuously evolving process of revision and refinement. Our Cosmic Curriculum is intended to be a flexible vehicle through which the changing and developing needs of all our learners can be met. We will be engaged in an ongoing cycle of monitoring, evaluating, planning and reviewing. Reflective practice, professional learning and stakeholder collaboration will inform future curriculum decisions ensuring that our aspirations to provide an excellent educational experience for every pupil are achieved.

70 THINGS
TO DO
BEFORE YOU
LEAVE
TRELALES!

Our Star
Features!

Make friends!	Experience live theatre	Become part of a team	Learn how to whittle	Have picnic outdoors	Visit Laleston post office	Go on a trip to the beach	Follow a recipe	Jump in puddles	Celebrate special days
Become helpwr heddiw	Complete scavenger hunts	Take part in imaginative role play	Complete a jigsaw puzzle	Take part in a live performance	Create your own assault course	Go swimming with your class	Take part in the school Eisteddfod	Take part in a vote	Listen to a live musical performance
Learn how to ride a bike/scooter	Learn a Welsh folk dance	Take part in a talent show	Practise your ball skills	Create your own musical composition	Learn how to light a campfire	Go on a minibeast hunt	Raise money for a local charity	Gain a lifetime pen license	Take part in a class debate
Plan your own event	Go on a residential trip	Take a school assembly	Meet an author in 'real life'	Fly a kite on a windy day	Communicate with local government	Write a letter	Go on a local litter pick	Be in a school concert	Dress up (lots!!!)
Have a party	Toast a marshmallow	Visit a zoo	Cook	Join a club	Recite a poem	Climb a tree	Take the lead	Get messy	Sing (lots!!!)
Visit the library	Go for a walk in the rain	Take part in a school sport	Plant something	Play hide and seek	Play board games	Go pond dipping	Meet dinosaurs	Write your own stories	Look after a living thing
Learn how to communicate in another language	Complete your own research projects	Spend a day as a Victorian school child	Design and make your own product to sell.	Complete a project in the nature area	Take an historic tour of Laleston village	Use ICT to make and animate movies	Spend a day as your favourite book character	Learn how to play a musical instrument	Visit a new place with your friends

At Trelales we believe that the key to successful pupil learning is excellent teaching as outlined in the twelve pedagogical principles. We are committed to ensuring that we know each individual learner well in order to achieve equity and excellence for all. We enable our pupils to develop and achieve at a level and pace that reflects their own educational needs. AfL strategies have been embedded into our classroom practices to ensure appropriate next step planning and differentiation. Learner progression lies at the heart of our new curriculum and assessments are completed when we feel they facilitate this purpose.

We recognise that curriculum design is a continuously evolving process of revision and refinement. Our Cosmic Curriculum is intended to be a flexible vehicle through which the changing and developing needs of all our learners can be met. We will be engaged in an ongoing cycle of monitoring, evaluating, planning and reviewing. Reflective practice, professional learning and stakeholder collaboration will inform future curriculum decisions ensuring that our aspirations to provide an excellent educational experience for every pupil are achieved.

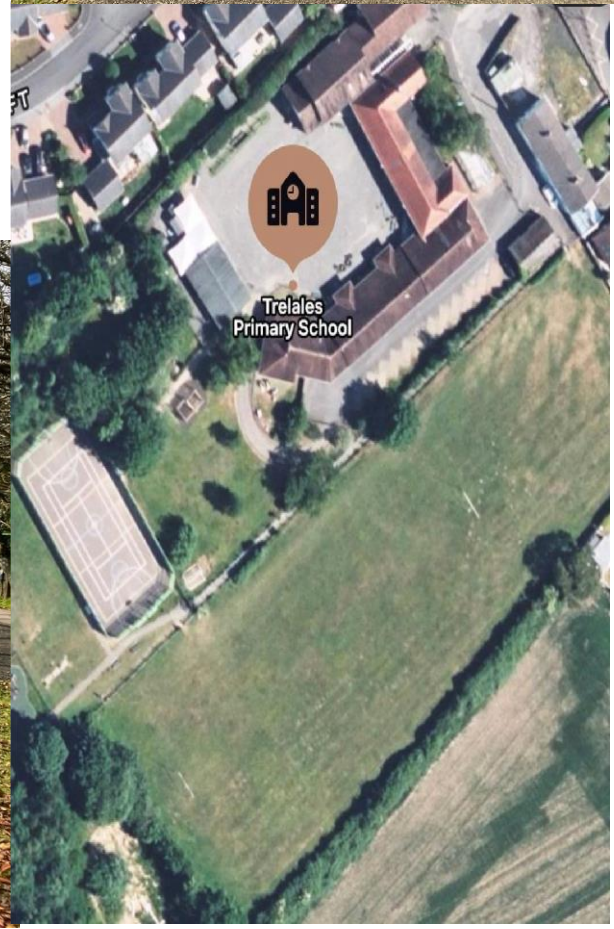
In Trelales, the majority of our teaching is done through the medium of English. However, Welsh is taught in all classes including use of incidental Welsh throughout the school. Pupils are encouraged to speak Welsh with their peers and other adults, supported by a structured progression of words and phrases. Welsh Language is promoted in classes through choice of literature and display and pupils are given the opportunity to experience Welsh culture and heritage wherever possible. Our annual school Eisteddfod is used to promote Cwricwlwm Cymreig and pupils take part in a number of competitions through the medium of both Welsh and English.



Sport and Physical Activity

We place a strong emphasis on maintaining a healthy, active lifestyle at Trelales, and we have extensive grounds to promote this, including a multi-use games area, a playing field suitable for football, rugby, athletics and cross country and the school grounds include two trim trails suitable for different ages. We also have an open grassed area used for a variety of activities and a nature area. Pupils from Years 3-6 are provided with swimming lessons. Pupils are encouraged to participate in all areas of P.E. and games. Our older pupils also participate in a variety of inter-school matches and tournaments.

Pupils are required to change for their PE and games lessons. Pupils are required to wear dark shorts/leggings/jogging bottoms and a white t-shirt when taking part in school PE lessons. Plimsols ('daps') may be worn for indoor sports if required and trainers are required for outdoor activities. All jewellery, including pierced earrings, must be removed for all PE and sport activities. For competitive inter-school matches and tournaments, team kit will be provided.



Extra-Curricular Activities

There are a variety of extra-curricular activities on offer at Trelales. These are held either during lunchtimes or after school. The clubs can vary over time depending on staffing and demand and some are seasonal. The clubs we currently offer are:

Choir – Trelales Treble Clefs

Guitars – Super Strummers

Rugby

Netball

Football

Cross Country

Rounders

Basketball

We also offer woodwind, brass and violin lessons at school, which are taught by experienced peripatetic teachers.

School Committees

At Trelales we have a number of pupil voice committees to ensure that everyone has a say about the things we do. All pupils from year 3 to 6 are on a committee. Our committees include a Criw Cymraeg who develop the use of the Welsh language in our school, Digital Champions who promote and support the use of digital technology, Eco Warriors who support our school to save the planet, Community Cadets who promote and develop links with our local community and Pupil Caretakers who help to ensure our school environment is the best that it can be.

We also have a school council who meet with each committee to share ideas and discuss action plans. The school council then feedback to the head teacher, staff and school governors. The school council play an important role is ensuring all pupils in our school have their say and are able to “shine bright and be their brilliant best!”

Relationships and Sexuality Education (RSE)

From September 2022, Relationships & Sexuality Education (RSE) has replaced the previous SRE (Sex & Relationships Education) and is a statutory part of 'Curriculum for Wales'. The RSE Code sets out the requirements for SRE which is structured within three broad themes of Relationships and identity, Sexual health and well-being and Empowerment, safety and respect. Within each of these themes, staff throughout the school will continue to ensure that our provision is age and developmentally appropriate for our learners. Staff are currently reviewing our existing provision and we will be consulting with our community and school families during this year to ensure that our future provision continues to reflect the needs and views of our community. As a statutory part of the curriculum, there is no 'right of withdrawal' from RSE.

Religion, Values and Ethics (RVE)

Religion, Values & Ethics (RVE) is a mandatory part of 'Curriculum for Wales' as part of the Humanities AoLE. Our RVE provision has regard for the local SACRE syllabus and is pluralistic, taking account of the teaching and practices of the other principal religions represented in Wales whilst also reflecting that a number of non-religious philosophical convictions are also held in Wales. Our RVE provision is provided in an objective and critical way, taking an impartial approach that does not require or encourage learners to be religious or non-religious, or to accept a prescribed viewpoint. As a mandatory part of the curriculum, there is no 'right of withdrawal' from RVE (not to be confused with 'collective worship' – see below).

Collective worship ('assemblies') is a statutory part of school provision and is primarily Christian in character. We encourage pupils to consider and reflect on moral, social as well as spiritual issues. During assemblies, pupils are encouraged to explore their own and others' beliefs and value and to participate, respond to and challenge new ideas. Collective worship is structured to show sensitivity to the individual faiths and beliefs of all members of the school community. This includes visits from local faith groups. Any parents who, for religious reasons, wish to withdraw their children from collective worship are invited to discuss this with the head teacher to be aware of the possibility of alternative arrangements.

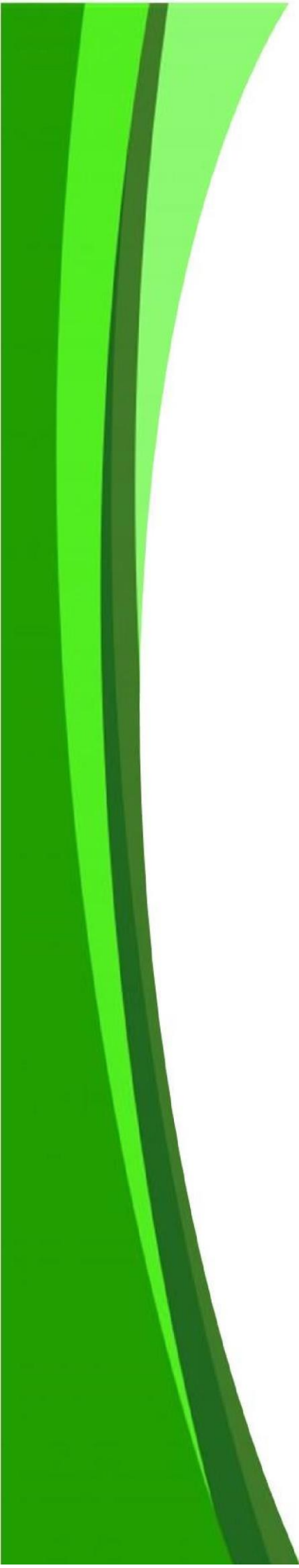
Transition

Most of our pupils in year 6 transfer to Bryntirion Comprehensive School which is the secondary school in our local cluster. Some of our pupils choose to attend other local secondary schools, including Brynteg and Porthcawl. We are in regular communication with secondary schools and transition opportunities are in place to ensure pupils experience a smooth and positive transition to their chosen secondary school. Transition experiences occur throughout the year, where pupils visit Bryntirion for sporting and drama events and lessons. Staff from Bryntirion also visit us at Trelales to deliver Maths, PE and French sessions. Our Year 6 staff and ALN Coordinator arrange transition meetings with the Head of Year 7 in the summer term in order to discuss each pupil attending to ensure their needs are understood.

Residential trips

Year 6 have the opportunity to go on a residential stay while they are in Year 6, they will have the chance to take part in a variety of outdoor activities with their peers requiring teamwork, communication skills and resilience. Residential trips have been run successfully at Trelales for many years and provide children with the chance to develop their independence.





Additional Learning Needs (ALN)

A pupil has Additional Learning Needs if he or she “has a significantly greater difficulty in learning than the majority of others of the same age,” or “has a disability for the purposes of the Equality Act 2010.” Trelales is an inclusive school. We aim to provide every child with a broad and balanced curriculum where the needs of every learner are met. Most children, through good teaching and learning, make excellent progress. Any concerns over Additional Learning Needs and progress of a pupil, will be recognised and discussed as soon as possible. The school aims to ensure interventions are put in place to support that child and their progress is monitored closely by the class teacher and Additional Learning Needs Co-ordinator. The school works closely with many outside agencies to seek support for pupils that do not make the expected progress despite intervention. Pupil centred strategies are used to put the learner at the heart of all decisions made. When a pupil is identified as having an Additional Learning Need an Individual Development Plan will be written. The IDP will outline the pupil’s main needs and how, as a school, we will ensure that their needs are met. Parents will play an important role in supporting to identifying the correct provision and will be involved throughout the process. Regular reviews will ensure that the provision remains appropriate.

Home-School Communication

Parents are asked to provide a range of information for their children when they first start at Trelales, including personal details, emergency contacts and allergy information. As part of our day to day school business, we store, share and use certain personal information. This is subject to GDPR (General Data Protection Regulation) and is covered in our privacy notice and GDPR policy. We also ask parents to provide their consent to further activities which are common to the life of the school, such as using photographs and video access to online services.

At Trelales, we use the Teachers2Parents system in order to communicate general information to parents via text and e mail, and so parents are advised to keep their contact information up to date to ensure effective communication.

Classes use Class Dojo to share photos and information about day to day activities and children's achievements.



School admissions, charging and complaints policy

Admissions

The entry of children to schools is controlled and administered by an 'Admission Authority'. In the case of community schools, this is Bridgend County Borough Council (LEA). In accordance with the Education Regulations 1999, the relevant area for the Admission Authority is the geographical area of the County Borough of Bridgend. Where the LEA is the admission authority, the school's governing body is under a duty to implement the LEA's decision on applications, and to act in accordance with the LEA's admission arrangements.

Children are admitted into each year group up to our standard number. Parents who require a place for their child need to make an appointment to meet with the Head Teacher in order to discuss admission and to look around the school. Children are invited along to this meeting so that they can become familiar with the school. The child may start whenever a parent requests.

Parents of children already in other local schools are asked to discuss the move with the headteacher of the school that their child currently attends. We do not accept children from neighbouring schools until the headteacher of that school has been informed and we do not encourage the move unless a valid reason can be given.

We provide prospective parents with a copy of our prospectus and we provide all parents with an information form to fill in before their child begins school.

If a child is admitted to Trelales from another school, our administration officer requests records from a child's previous school, some of which may be included in our database.

Charging policy

When organising school trips or visits which enrich the curriculum and educational experience of pupils, the school invites parents to contribute to the cost of the trip. All contributions are voluntary. If we do not receive sufficient voluntary contributions, we may have to cancel a trip.

Complaints

Complaints should initially be resolved in discussion with the Head Teacher. If this fails and the issue remains unresolved the matter then may be the subject of a formal complaint and referred to the Chair of Governors. If the governor's investigations fail to provide a satisfactory response, the complaint will then be referred to the LEA. The Head Teacher will supply the relevant names of designated governors and relevant LEA officers and information about the approved stages regarding complaints via the Governing Body or LEA, as appropriate.

Equal Opportunities

We do not discriminate against anyone, be they staff or pupil, on the grounds of their sex, race, colour, religion, nationality, ethnic or national origins and we promote the principles of fairness and justice for all through the education that we provide in our school.

At Trelales, we ensure that all pupils have equal access to the full range of educational opportunities provided by the school and we constantly strive to remove any forms of indirect discrimination that may form barriers to learning.

We are aware that prejudice and stereotyping is caused by low self image and ignorance. Through positive educational experiences and support for each individual's point of view, we aim to promote positive social attitudes and respect for all cultures and minority groups; challenging stereotyping whenever it occurs.

We will do this by:-

- Ensuring that rewards and punishments are the same for all children.
- Grouping children in a variety of different ways, for example, not only by ability or gender.
- Ensuring assemblies and lessons have a multi-cultural element.
- The wearing of school uniform, which is practical and does not reinforce gender.
- Adhering to our admissions policy.

Pupils with disabilities

In partnership with the LEA, we strive to adapt to the needs of children with disabilities and enable them to play a fully integrated part in school life. When disabled pupils wish to attend Trelales, any special arrangements necessary to accommodate their disability will be considered. Our school has access for wheelchair bound pupils.

School Security

No child is allowed to leave school during the day unless collected by a parent or by another adult, at the request of a parent. If being collected during the school day, children must be collected from inside the school, not from the school gates. Visitors should press the keypad at the main school door and report to the secretary's office.

The school's doors are locked from the time the children enter the school to the end of the school day. During the school day access into the school is only available through the school reception via keypad activation. All other doors in the school are only accessible via key fobs.

Children are supervised on the school yard in the morning by a member of staff between 8.50 and 9.00. Parents are reminded that there is no member of staff on the school yard before this time. Children that attend our school breakfast club are supervised by the breakfast club staff.

At break times children are supervised on the school yard by school staff and an additional designated member of staff is available to administer first aid should it be needed during this time. At lunchtimes, children are supervised by our lunchtime supervisors. During wet playtimes and lunchtimes, children are also supervised by staff or lunchtime supervisors.

Children who are taken on visits are reminded that good behaviour and great care are needed at all times. We reserve the right to exclude a child from a visit should we believe that the child's behaviour may be problematic.

There is a designated car park for school staff running alongside our school. For the safety of pupils, no one is permitted to drive in/out of the car park between the times of 8.45-9.10am and 3.15-3.40pm as during these times children are being brought to/leaving school.